



<b>Code:</b>	<b>COLD UNITS</b>	<b>Model:</b>
131141070	ADVANCE K 140-4 REFRIGERATOR CABINET	ADVANCE K 140-4

 Hygiene		 Easy Maintenance
 Heavy Duty		 Efficiency

**MAIN FEATURES**

- \* GN 2/1 size refrigerator with double door
- \* 430 quality stainless steel
- \* Operating temperature 0 / +10 °C
- \* Clean free condenser
- \* Maximum internal capacity minimal temperature increase during defrost.
- \* Most efficient air distribution inside with a specially designed air channel.
- \* The inner liners and inner lower base which are moulded comply with the highest hygiene standards with rounded corners and are made of stainless steel.
- \* Monoblock design
- \* Automatic fan cutout switch and internal led light
- \* Wide magnetic removable gasket with triple insulation area provides an effective seal which reduces heat lost.
- \* 40-42 kg/m<sup>3</sup> density environment friendly HFC-Free Polyurethane insulation for low energy consumption (60 mm)
- \* Protecting Class (IP2X)
- \* Ventilated cooling design
- \* Reversible door allows the appliances to be adapted to any individual installation site.


**OPTIONS**

- \* **Leg Option:** Leg/Castor
- \* **Shelf Option:** Nylon
- \* **Plug Option:** UK/EU

**ACCESSORIES**

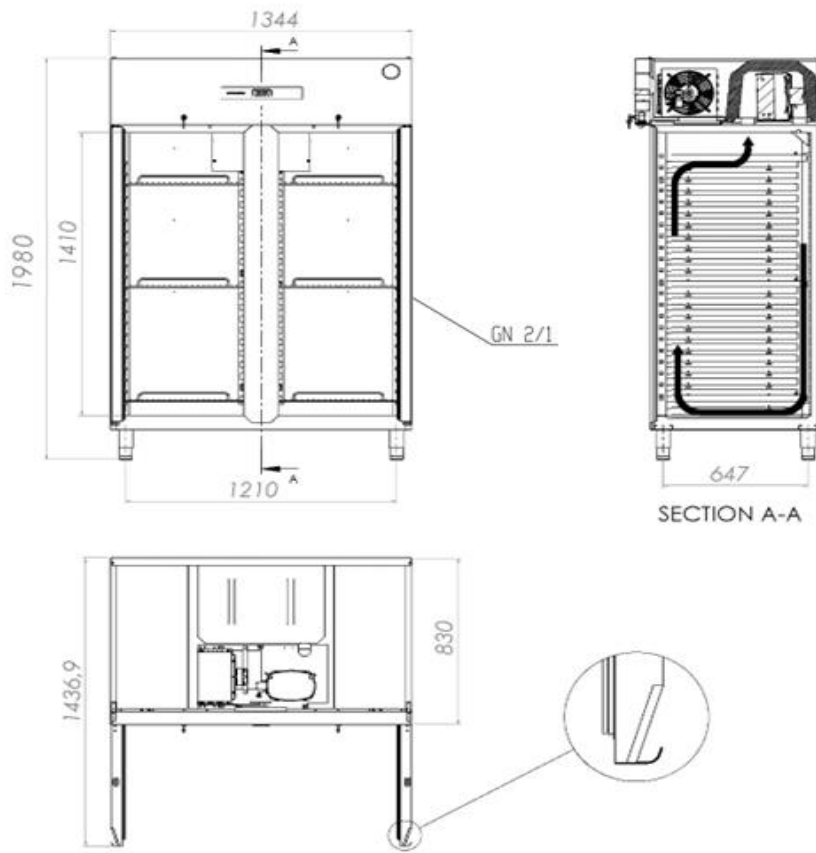
- \* Master Key
- \* Set of Plastic Coated Shelf
- \* Double Door Cabinet Rails
- \* Set of Stainless Steel Leg
- \* Set of Ø100 Castor

**STANDARDS**

<ul style="list-style-type: none"> <li>* EN 60335-1</li> <li>* EN 60335-2-89</li> <li>* ISO 22041:2019</li> </ul>	<p>European Standard relating to safety of household and similar electrical appliances</p> <p>European Standard relating to particular requirements for commercial refrigerating appliances with an incorporated or remote refrigerant unit or compressor</p> <p>Refrigerated storage cabinets and counters for professional use Performance and energy consumption</p>	
---	---	---



<b>Code:</b>	<b>COLD UNITS</b>	<b>Model:</b>
131141070	ADVANCE K 140-4 REFRIGERATOR CABINET	ADVANCE K 140-4



<b>DIMENSIONS (Net)</b>		<b>DIMENSIONS (Shipping)</b>	
* Width (mm) :	1344	* Width (mm):	1410
* Depth (mm) :	830	* Depth (mm):	860
* Height (mm) :	1980	* Height (mm):	2050
* Weight (kg) :	176	* Weight (kg):	192
		* Volume (m³):	2,48

<b>TECHNICAL SPECIFICATIONS</b>			
* Gross Volume:	1200 L	* Cooling Temperature:	0 / +10 °C
* Net Volume:	797 L	* Cooling Gas Type:	R290
* Climate Class:	CC5 (+40 °C - %40 Rh)	* Cooling Capacity:	634 W (-10° / +45°)
* Energy Efficiency Class:	C	* Supply Voltage:	230V / NPE 50 Hz
* Energy Efficiency Index:	48,32	* Protection Class:	IP 2X
* Energy Consumption:	2,54 kW/24h	* Cooling System Design:	Ventilated
* Connection Load:	270 W	* Sound Level:	52 dB

